



Increasing Productivity and Incomes of Tribal Farmers by Integrated Intensified Farming System



Project Completion Report	Report submitted to	Reporting Period
WASSAN, Hyderabad	Coromandel International Ltd.,	July 2022 to March 2023



Name of the Project

INCREASING PRODUCTIVITY AND INCOMES OF TRIBAL FARMERS BY INTEGRATED INTENSIFIED FARMING SYSTEMS

Coromandel International Ltd supported WASSAN for the project – ***“Increasing Productivity and Incomes of Tribal Farmers by Integrated Intensified Farming Systems”***. This project was implemented by WASSAN in selected Grama Panchayati is Alluri Sita Rama Raju district, Andhra Pradesh (near Araku / Paderu) from July 2022 to Mar 2023. This is the Project Completion Report, after completing the proposed physical activities and some additional activities with the grant.

■ Gravity-based irrigation system with inlet chamber, pipeline network and valves to supply water from springs/streams from high altitudes to farmer's fields (zero energy system)

• GRAVITY IRRIGATION SYSTEM

For the establishment of gravity irrigation facility, WASSAN has identified Sunnametta Village as potential village to cover 48 acres. Assessment was conducted through a series of formal and informal meetings with Sunnammetta village farmers. WASSAN team discussed about community contribution in the form of cash and labour. WASSAN conducted landscape planning and plot-wise surveys with the participation of the community and prepared a plan and estimate of the project. 48 acres owned by 43 tribal farmers is proposed to be covered under this initiative and this land will be protected through an assured irrigation facility for both the Kharif and Rabi seasons. Two farmers took the leadership to mobilise community to implement the project. Farmers mobilized



contribution Rs.75000 and used it for earth works and some labour component, to kick start the work. WASSAN repaired the check dam (including desilting), renovated the canal, extended the canal to the fields, established an underground pipeline network covering 48 acres and several outlets were established to cover entire 48 acres of land. A Two-member committee was formed for manage governing system. This system can irrigate seven acres of land per day.

Local DIMSA FPO came forward to provide necessary assistance for this project particularly post project related assistance like annual maintenance arrangements. Farmers

can generate an additional income of 25000 Rs/ Acre from summer crops, the project is expected to generate 12 Rs lakhs/ year from 48 acres.



Ponds. 35 farm ponds (Out of 39) already have fruit-bearing plants i.e., Banana, Sapota, Custard apple, Lemon, Pomegranate and Papaya on their bunds. All these ponds were fenced with wooden poles and covered with green mesh. Few more plants will be added in rainy season i.e. Redgram, pineapple, agave, super napier and castor. Though WASSAN initially proposed only 35 farm ponds, WASSAN could construct 39 farm ponds (4 farm ponds additionally without additional costs) As per the original project proposal, we targeted 35 farm ponds due to variation in the pond size, WASSAN extended the support to cover 4 more farmers. Pond sizes varies from 10 mt X10 mt to 20 mt X 20 mt. Out of these 39 Eco Farm Ponds, WASSAN selected 10 ponds for integrating with Solar/ Oil Engine to store water in a storage drum (1000 lts capacity). These drums are placed on farm bund (at an elevation) so that water could be sent to fields through gravity. This infrastructure is connected with irrigation entrepreneur who has an oil engine. This entrepreneur can support 5 farmers in a day in lift the water from farm pond to the water storage tank to ensure protective irrigation is provided to all fields, where water cannot reach naturally. Each farmer gets the services of entrepreneur (once in a week).

“We requested ITDA for the renovation of check dam and gravity irrigation facility but no response from them but now with the help of Coromandel and WASSAN our dreams got fulfilled and we are happy and thankful to supporting agencies”

- Mr Seetharam

Sarpanch of Sagara Grampanchayat.

■ Eco-Farm Ponds with vegetables, fruit trees, fish production and protective irrigation:

WASSAN identified beneficiaries from 7 Grama Panchayati. (In the first phase 3 GPs and second phase 4 GPs). 39 farm ponds were constructed in 24 villages of 7 Gram Panchayats of Paderu Division. Farmers have paid their contribution Rs.1.37 lakhs and used it for pond intensification and integration of horticulture and fisheries. WASSAN ensured that farmer's contribution is deposited in the DIMSA FPO account. Together with DHIMSA FPO, these farmers utilized this contribution fund to convert farm ponds into Eco Farm

Farmer's Contribution in Eco Farm Ponds

Name of the GP	No. of farmers	Contribution Rs.
Chinalabudu	1	3000
D Gonduru	2	10000
Gasabha	4	4000
Korrai	5	35000
Pedalabudu	4	14000
Sagara	10	31500
Sovva	12	38000
Grand Total	39	137500



■ **Kimudu Jyothibas,** Odiyavalasa village of Sovva GP. With the support of eco farm pond, he could grow carrot, onions, cabbage and Mirchi on 0.85 acres. He earned Rs. 22000 during Dec 2022/ Jan/ Feb 2023.



■ **Janni Seethamma,** Panasavalasa village of Sovva GP. She grows leafy vegetables, mirchi, cabbage and brinjal in 0.70 acres through eco farm pond and earned 18000 Rs during Dec 2022/Jan and Feb 2023.



Photo - 1: Cabbage and cowpea crops.



Smt. Kimudu Kamala, Odiyavalasa Village of Sovva GP. Grown vegetables in 0.58 acres through Eco Farm Pond water and earned Rs.12000 through sales of vegetables.

■ Irrigation Service Centres with Pump, Pipes and Sprinkler Sets.

4 Entrepreneurs have been trained to serve other farmers. They also learned how to manage Oil Engines and Sprinkler sets to offer protective irrigation facilities on a custom hiring basis. 23 farmers accessed services from these 4 entrepreneurs in Garadaguda, Panasavalasa, Odiyavalasa villages of Sovva GP, and Poddaguda village of Sagara GP.



📷 Photo - 2: Onions and leafy vegetables grown in this summer by Kamalamma.



📷 Photo - 3: Farmers with their Rabi crops (Cabbage)

Each oil engine entrepreneur provides service to the 5 acres of land along with neighbour farmers. Farmers cultivated various crops like Cabbage, Carrot, Tomato, Chilly, Beans, Maize, leafy vegetables.

chemicals, they generally apply farmyard manures and no other inputs are used. As part of the project, WASSAN supplied *Dravajeevamrutham* to these tribal women to increase productivity of their gardens.

■ Promoting Nutri kitchen gardens under Natural Farming principles:

WASSAN supported 127 tribal women with Bio inputs to enhance the productivity of their kitchen gardens. The main objective of this initiative is to reduce the dependency on the market for vegetables and increase own produce to meet household-level demand. Tribal women generally never apply



■ Trainings and Awareness Meetings

Conducted awareness meetings with farmers and Rythu Bharosa Kendra staff for the establishment of Nutri gardens to discuss seasonal crop management under the Natural Farming approach. Motivated them to use the services of the Agri Service Centre and Irrigation Entrepreneurs to save crops, particularly those who have water bodies to lift water with the support of oil engines.

■ Electrification of Coffee Pulper Machines

Many tribal farmers have coffee plantations. They use manual coffee pulpers to separate seeds from the coffee fruit. This manual process is very tiring and burdensome. WASSAN conducted R&D work and invented a motor that could be retrofitted to the existing manually operated baby pulper. This machine (motor) could process 300 kg/ hour with single person, while the manually operated baby pulper can process 50 Kg/hour with two persons. WASSAN conducted awareness camps/ demonstrated the use of this motorised baby pulper in the project villages. As a result of this, 10 farmers came forward to convert their manually operated baby pulper into motorised baby pulper. DHIMSA FPO took the responsibility of promoting this motorized baby pulper in this region, where there are thousands of farmers, who could benefit from this simple innovation.



📷 Photo - 4: A tribal women operating electrified coffee pulper at Vasabanda village.

IMPACT OF THE PROGRAMME

- Existing springs/discharge places came to utilization. 48 acres of rabi fallows brought into production. Crops in 48 acres are protected from dry spells during Kharif season. Depending on the monsoon, about 24 acres of land could be cultivated in summers too.
- 39 new farm ponds were created and additionally 50 acres are secured irrigation for rabi and summer crops, protect their crops during Kharif from dry spells.
- Around 350 farmers benefited through this project include kitchen garden and irrigation support.
- Farmers from adjacent panchayats were motivated by these initiatives and came forward to construct farm ponds in their villages.
- Farmers shared the cost of the project by mobilizing a community contribution of Rs 2,12,500/- (Rupees Two lakhs twelve thousand and five hundred only) for gravity water facility and creation of 39 eco farm ponds.

INTERVENTION – OUTREACH AND IMPACTS

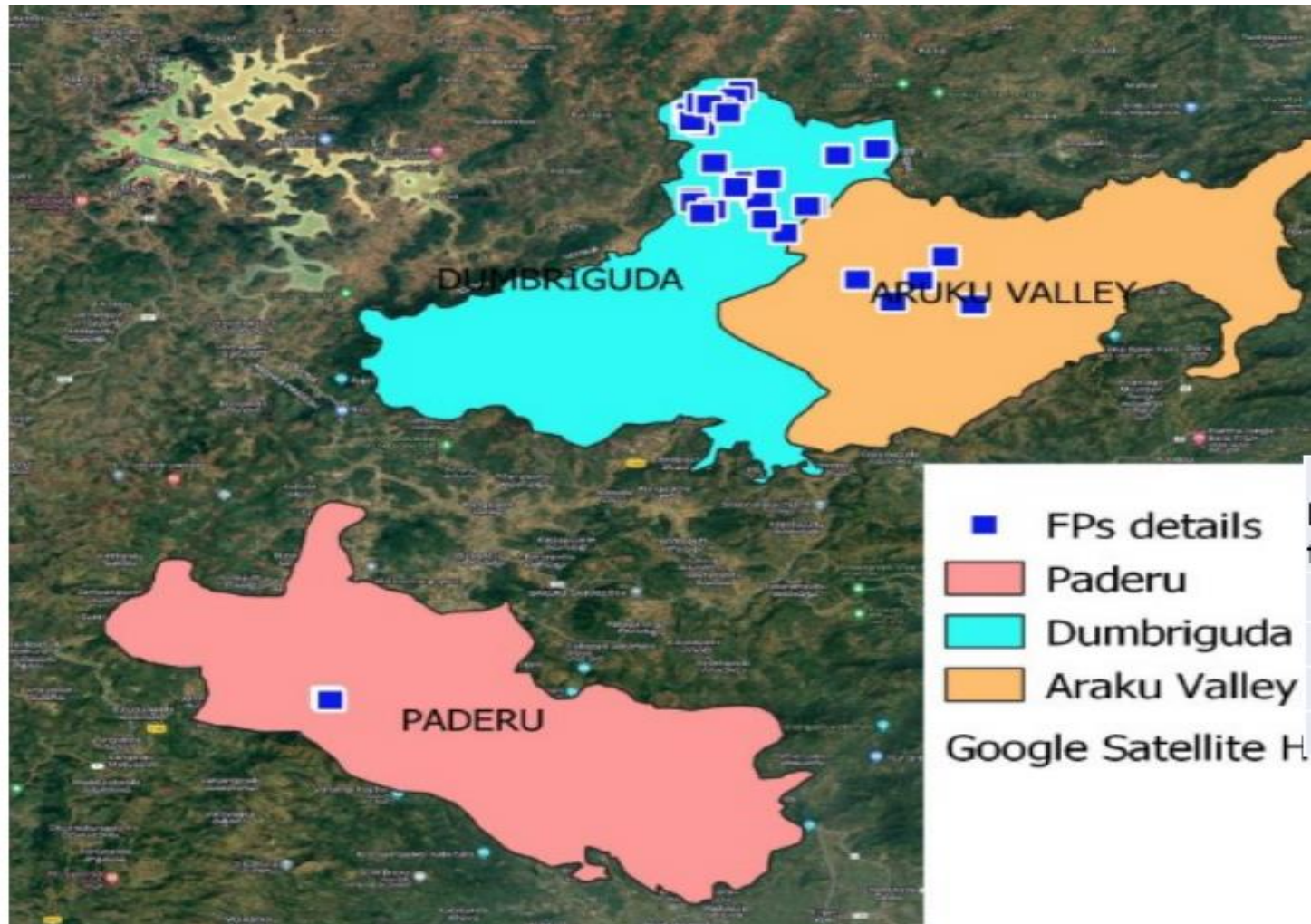
What was the intervention	Outreach	Impact on Incomes	Impact on Life
Gravity Based Irrigation System: Check dam and canals are renovated and underground pipeline is established to irrigate 48 acres of dry land in the Sunnam Metta village of Sagara GP	43 tribal farmers and 48 acres of land (48 Acres in Kharif, 48 Acres in Rabi and 24 acres in Summer)	Estimated Additional Incomes - 10000 Rs/ Acre/ Year - 5 Lakh/ Year	Drinking Water for 60 families and 300 Livestock
Water Conservation: 39 Farm ponds were constructed with intensified horticulture plantation/ vegetables on bunds and fisheries in the pond.	39 farmers and 50 acres of farmland	Estimated Additional Incomes - 10000 Rs/ Farmer/ Year – 3.9 Lakh/ Year	Fruits/ Vegetables/ Fish for household consumption for 39 families
Irrigation Service Centre: Promoted 4 Entrepreneurs and equipped with sprinkler sets and oil engine.	22 farmers could access irrigation services and irrigate their lands. DIMSA FPO is assisting for AMC.	4 Entrepreneurs earn 30000 Rs/ Season.	22 Farmers protect their crops and earn additional 2 Lakh/ Rs/ Year
Retrofitting Of Coffee Baby pulper: 10 Entrepreneurs started serving e other farmers in processing parchment of coffee	90 farmers got benefited with this enterprise.	90 families earn 9 lakh/ Year by savings in labour and good quality coffee fruits	Drudgery reduced for 90 women in processing coffee fruits
127 Women received the 2000 liters of Jeevamrutham / bio stimulants from the project for nutri gardens	127 Nutri gardens		Vegetables for 127 families for at least 8 months/ year

BUDGET AND EXPENDITURE STATEMENT

S No	Activity description	Unit	No of units	Unit cost	Total Budget	Share of Donor	Expenses	Variance
1	Gravity based irrigation system with inlet chamber, pipe line network and valves to supply water from springs from high altitudes to farmer's fields (zero energy system)	Acres	50	20000	1000000	950000	1208571	-258572
2	Eco-Farm Ponds with vegetables, fruit trees, fish production and protective irrigation	Pond	35	65000	2275000	2161250	1901071	260179
3	Irrigation Service Centers with Pump, Pipes and Sprinkler Sets. These equipment's are available to farmers on hire basis from an entrepreneur	Irrigation Service Centers	4	45000	180000	180000	179743	257
4	Training and awareness programs	Training Programs	12	10000	120000	120000	137863	-17864
5	Community Resource Persons	Resource Person Month	24	3000	72000	72000	71948	52
6	Project Staff	Person Month	30	40000	1200000	1200000	1199777	222
7	Travel	Month	12	15000	180000	180000	166402	13597
8	Overheads	Month	12	10000	120000	120000	117870	2129
9	Grand Total				5147000	4983250	4983250	0

ANNEXURES FOR ANNUAL REPORT

(A) Map of Farm Ponds with GPs Coordinates



(B) Farmer wise Farm Ponds details

S no	Name of the farmer	Village	GP	Mandal	Size of farm pond in M	Latitude	Longitude
1	K. Madhusudhanarao	Garadaguda	Pedalabudu	Arakuvalley	15x15	18.320608	82.877512
2	K Somara	Garadaguda	Pedalabudu	Arakuvalley	15x15	18.320087	82.907312
3	Dora Vijayakumar	Pittamamidivalasa	Pedalabudu	Arakuvalley	20x20	18.304612	82.932528
4	Gemmeli Sitaram	Sunnametta	Sagara	Dumbriguda	15x15	18.395184	82.809621
5	Killo Gasi	Poddaguda	Sagara	Dumbriguda	20x20	18.374012	82.82974
6	Killo Bhagavan	Poddaguda	Sagara	Dumbriguda	15x15	18.378043	82.82875
7	Killo Arjun	Karakavalasa	Sovva	Dumbriguda	15x15	18.432935	82.807491
8	Korra Pothanna	Goppulavalasa	Sovva	Dumbriguda	15x15	18.441459	82.822494
9	Gemmeli Bheemanna	Goppulavalasa	Sovva	Dumbriguda	10x10	18.436849	82.818668
10	Janni Appanna	Panasavalasa	Sovva	Dumbriguda	15x15	18.433454	82.80351
11	Gemmeli Parasuram	Odiyavalasa	Sovva	Dumbriguda	10x10	18.427521	82.797083
12	Kimudu Jyothi Basu	Odiyavalasa	Sovva	Dumbriguda	15x15	18.427343	82.797791
13	Padanayaki Rupa	Sovva	Sovva	Dumbriguda	20x20	18.419014	82.804061
14	Padanayaki Relli	Sovva	Sovva	Dumbriguda	15x15	18.421336	82.799161
15	Mattam Arjun	Sondingivalasa	Sovva	Dumbriguda	15x15	18.422204	82.799253
16	Gollori Nandhu	Sagara	Sagara	Dumbriguda	15x15	18.378573	82.820645
17	Pangi Kamaraju	Demuduvalasa	Sovva	Dumbriguda	20x20	18.429802	82.812528
18	Thangula .Balaram	Gadyaguda	Sagara	Dumbriguda	15x15	18.370212	82.830999
19	G.Ramchandar	Poddaguda	sagara	Dumbriguda	10x10	18.383862	82.825646
20	S. Jalandhar	Kodamjola	sagara	Dumbriguda	10x10	18.37293	82.799587
21	Ramboyi Simhachalam	Panasavalasa	Sovva	Dumbriguda	20x20	18.433706	82.802646
22	Korra Donnu	Panasavalasa	Sovva	Dumbriguda	10x10	18.432797	82.807347

S no	Name of the farmer	Village	GP	Mandal	Size of farm pond in M	Latitude	Longitude
23	Bisudora krishna	Kodamjola	Sagara	Dumbriguda	15x15	18.370164	82.799923
24	L.B.MohanRao	Panikiragani	Pedalabudu	Arakuvalley	15x15	18.306819	82.894364
25	Kindangi GopalRao	Gatherajalleda	Korrai	Dumbriguda	15x15	18.367694	82.856703
26	Buridi Arjun	Gatherajalleda	Korrai	Dumbriguda	20x20	18.367575	82.853996
27	Pangi Narsingarao	Logili	Gasabha	Dumbriguda	20x20	18.37969	82.819975
28	Pangi Damodhar	Logili	Gasabha	Dumbriguda	20x20	18.38494	82.835434
29	Gollori Madhu	Chinalabudu	Chinalabudu	Arakuvalley	15x15	18.335328	82.919031
30	Buridi Muthyalamma	Bondiguda	Korrai	Dumbriguda	20x10	18.367568	82.853798
31	Sadem Simhadri	Sovva	Demuduvalasa	Dumbriguda	20x20	18.427342	82.81617
32	Regam Mahesh	Doddipalli	D Gonduru	Paderu	13x23	18.053217	82.625946
33	Kota Ramaswamy	Doddipalli	D Gonduru	Paderu	20x20	18.051596	82.627554
34	Korra Laikon	Chinna Ajoda	Korrai	Dumbriguda	20x20	18.350422	82.842999
35	Vanthala Sahadev	Kusumaguda	Sagara	Dumbriguda	15x15	18.365543	82.809047
36	Korra Gopal Rao	Kusumaguda	Sagara	Dumbriguda	20x20	18.362954	82.804111
37	Pangi Raguram	Logili	Gasabha	Dumbriguda	15x19	18.40018	82.868269
38	Sinderi Krishna	Moniguda	Kollaput	Dumbriguda	15x15	18.404251	82.886934
39	Korra Gurumurthi	Peddajoda	korrai	Dumbriguda	20x10	18.35919	82.833524

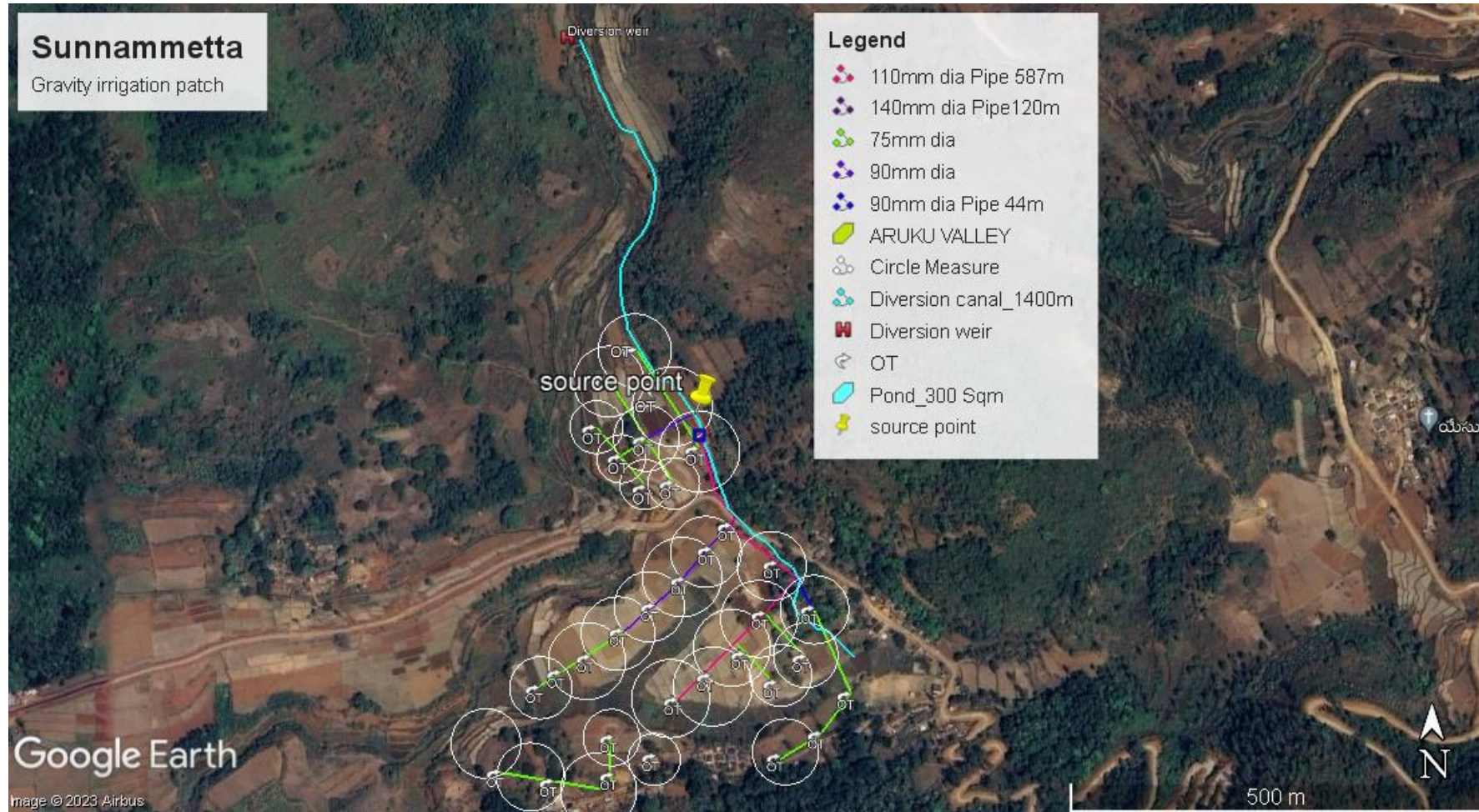
(C) Oil Engine entrepreneurs' details:

SI No	Name of the entrepreneur	Village	GP	Mandal	Rent paid for a season
1	Killo Gangadhar	Kotha Bishnumguda	Pedalabudu	Araku Valley	5000
2	Killo Malleswararao	Kotha Bishnumguda	Pedalabudu	Araku Valley	5000
3	Killo Bhagavan	Poddaguda	Sagara	Dumbriguda	5000
4	Someli Parasuram	Panasavalasa	Sovva	Dumbriguda	5000
	Total				20000

(D) Coffee Pulper with Motor:

S.No	Name of the farmer	Village	GP	Lat	Long
1	Chedda Chaithanya	Vasabandha	Sagara	18.22396	82.48536
2	Chedda Visanadh	Vasabandha	Sagara	18.22396	82.48536
3	Sinderi Samba	Similiguda	Sagara	18.3816	82.78875
4	Gunta Surendhra	Goppulavalasa	Sovva	18.44026	82.8201
5	Pangi Rajkumar	Mogiriguda	Sagara	18.38486	82.81788
6	Pangi Jairam	Egumalapadu	Kotnapalli	18.18865	82.74287
7	Kuda Kondababu	Karakaputtu	D.Gonduru	18.06083	82.64361
8	Korra Narsingarao	Sagara	Tikilibedda	18.3679	82.82256
9	Baka Ramesh	Sagara	Sagara	18.3679	82.82256
10	Dippala Pentayya	D.Gonduru	D.Gonduru	18.06503	82.63167

(E) Gravity irrigation patch:



(F) Gravity Irrigation farmers details

SI No	Farmer Name	Extent In Acres
1	Gemmeli Appanna	1.03
2	Gemmeli Arjun	1.25
3	Gemmeli Balaram	2.33
4	Gemmeli Chinnayya	1.15
5	Gemmeli Gopinadh	2.59
6	Gemmeli Malathi	1
7	Gemmeli Nagesh	1.12
8	Gemmeli Nukaraju	3.25
9	Gemmeli Ramachandar	2.21
10	Gemmeli Ratnamma	0.76
11	Gemmeli Santhi	0.55
12	Gemmeli Seethamma	1.42
13	Gemmeli Seethanna	0.73
14	Gemmeli Seetharam	0.65
15	Gemmeli Towdanna	1
16	Gemmili Suresh	1.65
17	Korra Chinnammi	0.5
18	Korra Mothi	0.51
19	Tamarala Appanna	0.59
20	Tamarala Appayamma	1.5
21	Tamarala Dhanunjai	1.6

SI No	Farmer Name	Extent In Acres
22	Tamarala Dsudha	0.6
23	Tamarala Gopal	1.3
24	Tamarala Gopinath	0.6
25	Tamarala Ramachandra	0.7
26	Tamarala Ramanna	1.27
27	Tamarala Sanjeevarao	1.2
28	Tamarala Sumithro	1.13
29	Tamarla Apparao	1.01
30	Tamarla Gopal	1.5
31	Tamarla Kujjanna	0.47
32	Tamarla Sanjeevarao	0.48
33	Tamarla Seetharam	0.42
34	Tamarla Trinadh	1.35
35	Tamarla Vinodhkumar	0.52
36	Tamrala Dhamodar	0.5
37	Tamrala Prakash	2
38	Thamarala Raghunath	0.62
39	Thamarla Bheemaraju	1.3
40	Thamarla Champavathi	1.18
41	Thamarla Dhamodar	1.46
42	Thamarla Venkatarao	2.06
43	Vanthala Ramanna	1.38

(G) Kitchen Garden Farmers details

S.NO	Farmer Name	w/o /father	Village	Gram Panchayat
1	B.Kumari	NageswarRao	Adapavalasa	Sagara
2	K.Anadarao	Apparao	Adapavalasa	Sagara
3	P.Padma	Hari	Adapavalasa	Sagara
4	LeelaRani	Mohanrao	Adapavalasa	Sagara
5	Bhumi	Kannayya	Adapavalasa	Sagara
6	Subbamma	Venaktrao	Adapavalasa	Sagara
7	Sumitra	Gundu	Adapavalasa	Sagara
8	CH.Laxmi	NageswarRao	Adapavalasa	Sagara
9	CH.Laxmi	Krishnarao	Adapavalasa	Sagara
10	CH.Ratnakumari	Rammurthi	Adapavalasa	Sagara
11	K.Monimma	Neelakantam	killoguda	Sagara
12	K.Gayatri	Praushuram	killoguda	Sagara
13	Lalitha	Urdobh	killoguda	Sagara
14	K.Jamuna	Ramchandar	killoguda	Sagara
15	K.Dhnaya	Dyanidhi	killoguda	Sagara
16	V.Appalamma	Poddu	killoguda	Sagara
17	Ch.Kanthmma	Roolthon	killoguda	Sagara
18	Ch.Susheela	Srinivasrao	killoguda	Sagara
19	Ch.Susheela	Dyanidhi	killoguda	Sagara
20	Ch.Mothi	Debgun	killoguda	Sagara
21	T.Laxmi	pothuraju	Kusumaguda	Sagara

S.NO	Farmer Name	w/o /father	Village	Gram Panchayat
22	M.Malathi	Seetharam	Kusumaguda	Sagara
23	M.Susheela	GopalRao	Kusumaguda	Sagara
24	K.Laxmi	Banadhi	Kusumaguda	Sagara
25	Ch.Sumitra	Jaganadam	Kusumaguda	Sagara
26	P.Malathi	Sahadev	Kusumaguda	Sagara
27	K.Susheela	Krishnarao	Kusumaguda	Sagara
28	P.Dhanumayaithi	Balaram	Kusumaguda	Sagara
29	Dippu Anjali	Purinatham	Kusumaguda	Sagara
30	P.Donna	Mosya	Kusumaguda	Sagara
31	P.Anj	Sonnu	Baliyaguda	Sagara
32	Kindho	Musari	Baliyaguda	Sagara
33	P.Devi	Dhavid	Baliyaguda	Sagara
34	B.Savitri	Dharamarao	Baliyaguda	Sagara
35	P.Kuamri	Raju	Baliyaguda	Sagara
36	P.Rasmi	Kimbhu	Baliyaguda	Sagara
37	P.Anitha	Bharath	Baliyaguda	Sagara
38	B.Nadhaya	Krishnakumar	Baliyaguda	Sagara
39	P.Vinitha	Balakrishna	Baliyaguda	Sagara
40	B.Radha	Rajrao	Baliyaguda	Sagara
41	Bisudora Kanthamma	W/o.govardan	Kodamjola	Sagara
42	Bisudora Parvathi	Arjun	Kodamjola	Sagara
43	Bisudora Rajarao	S/o.anandarao	Kodamjola	Sagara

S.NO	Farmer Name	w/o /father	Village	Gram Panchayat
44	Sokeli Chinnammi	S/o.danrjai	Kodamjola	Sagara
45	Sokeli Jalandhar	S/o.danerjai	Kodamjola	Sagara
46	Sokeli Kamsula	W/o.mahadev	Kodamjola	Sagara
47	Sinderi Jumbera	Gahi	Similiguda	Sagara
48	Sinderi Keshavarao	Gindra	Similiguda	Sagara
49	Sinderi Leena	Relli	Similiguda	Sagara
50	Sinderi Mahesh	Bondru	Similiguda	Sagara
51	Sinderi Maliya	Thilsu	Similiguda	Sagara
52	B.Ramarao	Bheemana	Vasabanda	Sagara
53	K Arjun	Butanna	Vasabanda	Sagara
54	K Bongibabu	Bhaskarao	Vasabanda	Sagara
55	K Madhu	Nilanna	Vasabanda	Sagara
56	Korra Chandramma	Pralad	Vasabanda	Sagara
57	Korra Seetamma	Seethamma	Vasabanda	Sagara
58	Killo Nagesh	Laccky	goppuluvalasa	Sovva
59	G.Jyothi	Surendra kumar	goppuluvalasa	Sovva
60	G.Mani	BagaRaju	goppuluvalasa	Sovva
61	G.Polo	Bissu	goppuluvalasa	Sovva
62	M.Raji	Ranagarao	goppuluvalasa	Sovva
63	G.Polo	Komulu	goppuluvalasa	Sovva
64	V.Kamala	NageswarRao	goppuluvalasa	Sovva
65	Korra Padma	Buddu	goppuluvalasa	Sovva

S.NO	Farmer Name	w/o /father	Village	Gram Panchayat
66	Korra Bhagathram	Lachanna	Goppulavalasa	Sovva
67	Korra Lachchanna	Buchanna	Goppulavalasa	Sovva
68	Gunta Bisu	Kusunu	Goppulavalasa	Sovva
69	Gunta Devid raju	Bissu	Goppulavalasa	Sovva
70	Gunta Malleswararao	Bissu	Goppulavalasa	Sovva
71	Vanthala Nageswararao	Besu	Goppulavalasa	Sovva
72	Vanthala Chanda	Palusu	Goppulavalasa	Sovva
73	Vantala Chinnababu	Dombu	Goppulavalasa	Sovva
74	Marri Bingu	Ramanna	Goppulavalasa	Sovva
75	Gunta Singru	Kesiri	Goppulavalasa	Sovva
76	Marri Matsyaraju	Gasi	Goppulavalasa	Sovva
77	Gunta Komulu	Singru	Goppulavalasa	Sovva
78	korra Ginnu	Buddu	Sondingivalasa	Sovva
79	K.Arjun	Susmitha	Kiridivalsa	Sovva
80	K.seethamma	Seetharam	Kiridivalsa	Sovva
81	K.seethamma	Ramchandar	Kiridivalsa	Sovva
82	K.Paramm	Madhu	Kiridivalsa	Sovva
83	k.sampa	Ramchandar	Kiridivalsa	Sovva
84	Killo Sitaram	Loleeth	Karakavalasa	Sovva
85	Killo Lolith	Hari	Karakavalasa	Sovva
86	Gollori Sorru	Dodu	Karakavalasa	Sovva
87	Pangi Donnu	Sitaram	Karakavalasa	Sovva

S.NO	Farmer Name	w/o /father	Village	Gram Panchayat
88	Lokkoyi Ram	Sonabar	Karakavalasa	Sovva
89	Lokkoyi Sonnadhar	Mukunba	Karakavalasa	Sovva
90	Gollori Gopal	soru	Karakavalasa	Sovva
91	Gollori Anand	mahadev	Karakavalasa	Sovva
92	Killo Raghunadh	hari	Karakavalasa	Sovva
93	Lokoyi Donnu	joya	Karakavalasa	Sovva
94	Killo Arjun	kannu	Karakavalasa	Sovva
95	Killo Ramba	madu	Karakavalasa	Sovva
96	Ramboyi Lachchu	Beema	Panasavalasa	Sovva
97	Rode Simhadri	Narasayya	Panasavalasa	Sovva
98	Rode Mukund	Gasi	Panasavalasa	Sovva
99	Rode Appanna	Ashababu	Panasavalasa	Sovva
100	Gollori Seethamma	Parusaram	Garudaguda	Peddlabadu
101	Boyi Dosula	Korra Arjun	Garudaguda	Peddlabadu
102	Chittam Shanthi	Soniya	Garudaguda	Peddlabadu
103	Killo Guru	Lacchu	Garudaguda	Peddlabadu
104	Korra Laxmi	Bheemanna	Ganjayiguda	Peddlabadu
105	Korra Amala	Bharika	Ganjayiguda	Peddlabadu
106	Dora Kamala	W/o Samulu	Pittamamidivalas	Peddlabadu
107	Dora Poolmothi	W/o Vijaykumar	Pittamamidivalas	Peddlabadu
108	Vanthala Radhamma	W/o Raghu	Pittamamidivalas	Peddlabadu
109	Boyi Muthyalamma	W/o Monnu	Ganjayiguda	Peddlabadu

S.NO	Farmer Name	w/o /father	Village	Gram Panchayat
110	Boyi Sundaramma	W/o ravikumar	Ganjayiguda	Peddlabadu
111	Korra Sombiri	W/o Gundu	Ganjayiguda	Peddlabadu
112	Boyi Kalyani	W/o Bonjubabu	Ganjayiguda	Peddlabadu
113	Janni Polanna	W/o Buliki	Ganjayiguda	Peddlabadu
114	Boyi erramma	W/o Lachhu	Ganjayiguda	Peddlabadu
115	Boyi Chandramma	Thammanna	Ganjayiguda	Peddlabadu
116	Boyi Somara	Dalimma	Ganjayiguda	Peddlabadu
117	Korra Monju	S/o Pollu	Ganjayiguda	Peddlabadu
118	Someli Sombari	W/o Jinnu	Garudaguda	Peddlabadu
119	Pangi Jambo	Dannu	Kotragondi	Sovva
120	Pangi Krishna	Puyu	Kotragondi	Sovva
121	Marri Gopal	Jiya	Kotragondi	Sovva
122	Gemmeli Appanna	Chinnayya	Sunnammetta	Sagara
123	Gemmeli Chinnayya	Bheemanna	Sunnammetta	Sagara
124	Gemmeli Gopinadh	Ramachandar	Sunnammetta	Sagara
125	Gemmeli Ramachandar	Apparao	Sunnammetta	Sagara
126	Gemmeli Ratnamma	Sanyasirao	Sunnammetta	Sagara
127	Gemmeli Seethamma	Balaram	Sunnammetta	Sagara